



**OREGA**

**20 OLD BAILEY**

LONDON



20 Old Bailey, London, EC4M 7AN



[WWW.OREGA.COM](http://WWW.OREGA.COM) / 0800 977 8000 / [sales@orega.com](mailto:sales@orega.com)

**SPACE  
TO BE  
YOU.**



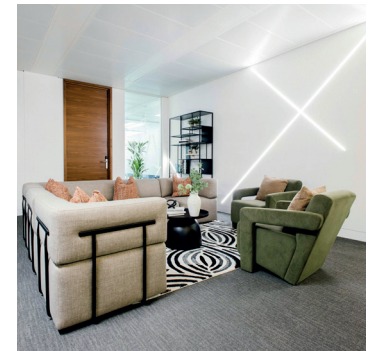
# Turbocharge your business Old Bailey

Situated in London's financial district, just a stone's throw away from London's most iconic law courts, 20 Old Bailey welcomes you with its stunning entrance, beautiful reception area and onsite café.

Our contemporary sound-proofed private office space at Orega Old Bailey combines style and substance to boost your productivity and image, while our flexible approach means you can upscale easily.

With an onsite café, luxury showers and changing rooms, bike racks and personal lockers, your people will stay, and recruitment costs drop, leaving you more to invest in the business.

Why be tethered to inflexible workspace when the future of work is adaptability? Give growth a free rein at Orega.



**SPACE  
TO GROW  
YOUR  
BUSINESS.**

# FEATURES



Tech-enabled meeting rooms



# SERVICES AVAILABLE

## SERVICED OFFICES

Per person  
Larger teams

from £750 p/m  
Call us on 0800 840 5509

## VIRTUAL OFFICES

Starting at £69 p/m

## MEETING ROOMS

Hourly  
Half day  
Full day

from £45  
from £135  
from £270



Climate control



Supercharged connectivity



Shower & changing facilities



Confidential waste collection



Collaboration spaces



# WHAT OUR CLIENTS SAY

We have recently moved to the fantastic Omega facilities and I couldn't be happier. The offices are excellent and ensure a perfect working environment. What makes the experience is the amazing staff who are extremely helpful professionals with exemplary knowledge. Their ongoing support have made coming to work an absolute joy.

MATTHEW DAUGHTON



In-house café



Concierge service



Barista Style coffee



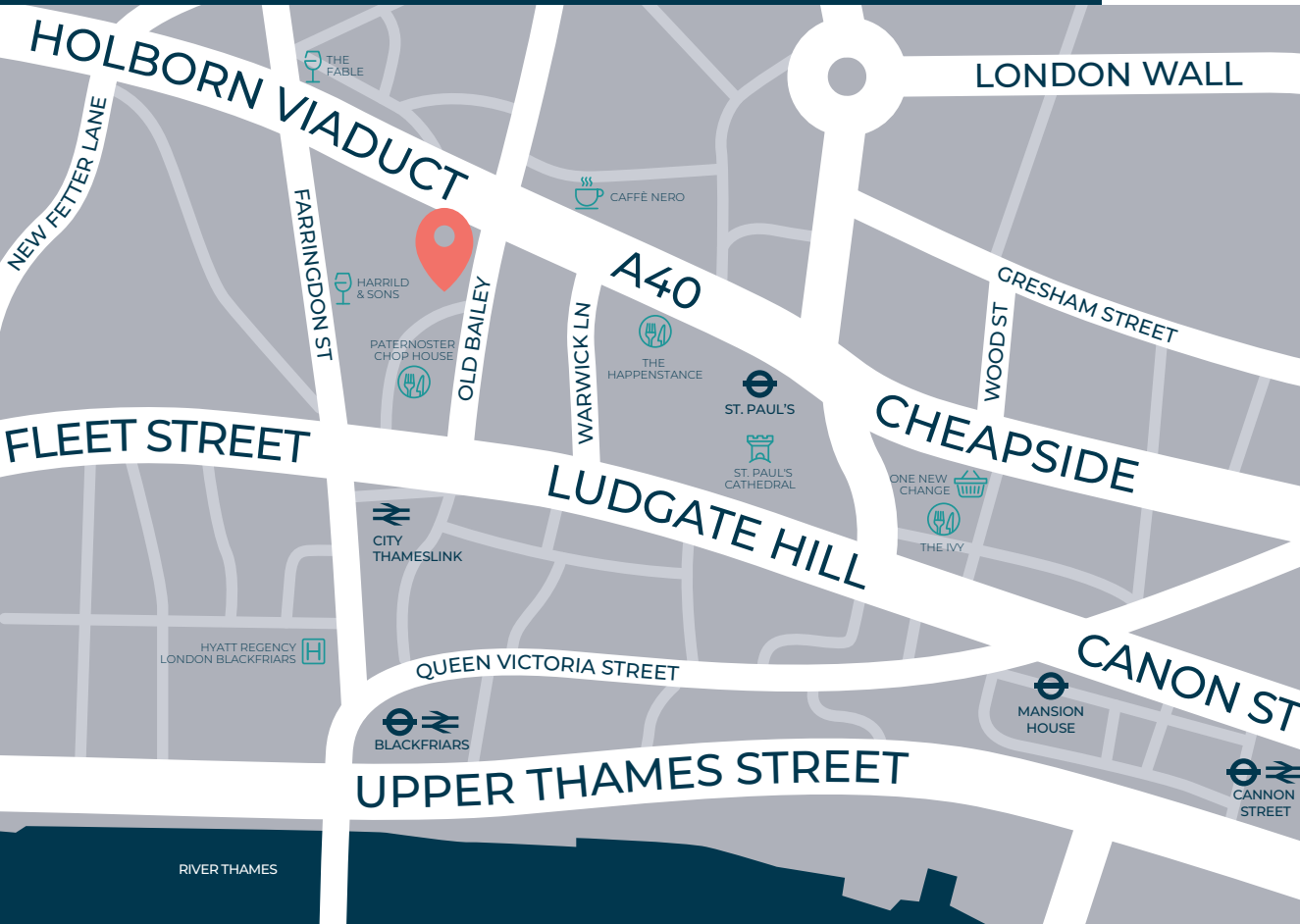
★ Trustpilot



AS OF 6/2024

# LOCATION MAP

20 Old Bailey, London, EC4M 7AN



# KEY STATION WALK TIMES

ST. PAUL'S	BARBICAN	BANK STATION
05 min walk	09 min walk	14 min walk
CITY THAMESLINK	FARRINGDON	BLACKFRIARS
02 min walk	08 min walk	08 min walk

**KEY TO LINES**

- CENTRAL LINE
- CIRCLE LINE
- DISTRICT LINE
- METROPOLITAN LINE
- HAMMERSMITH & CITY LINE
- DLR
- NORTHERN LINE
- WATERLOO & CITY LINE
- CITY THAMESLINK
- NATIONAL RAIL
- ELIZABETH LINE

# GETTING HERE

- 12 minute walk from river boat
- Regular bus routes nearby
- 3 minute walk to a Santander Cycle Bay
- 30 minutes from London City airport  
50 minutes from Gatwick airport and  
50 minutes from Heathrow airport

**BOOK A TOUR**  
[WWW.OREGA.COM](http://WWW.OREGA.COM)  
 0800 977 8000  
 sales@orega.com